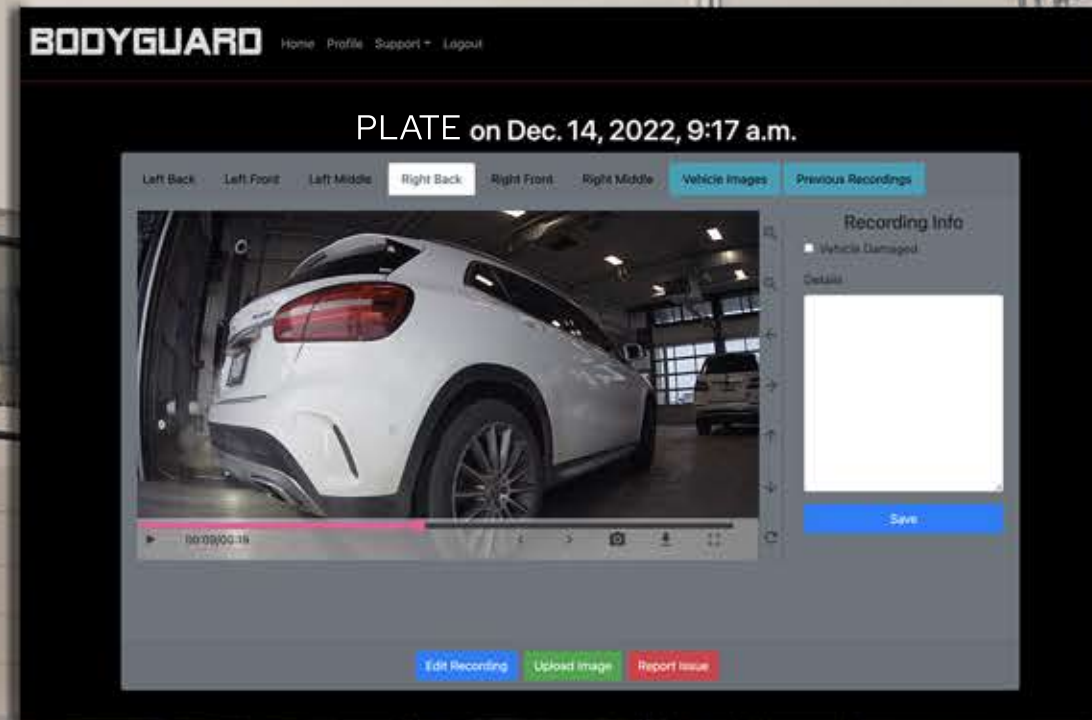


BODYGUARD: Best defense against vehicle damage claims

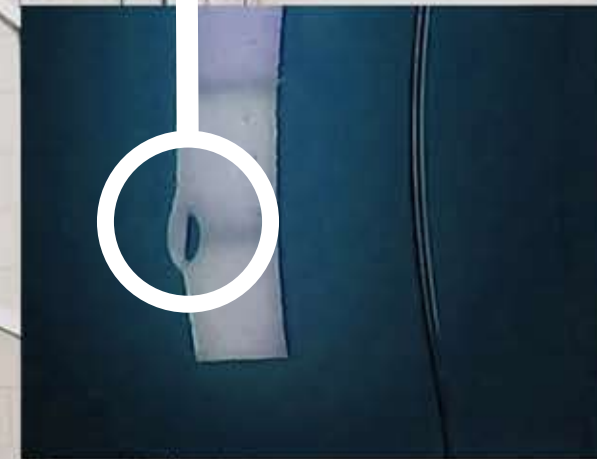


6 Strategically Placed Hi-Definition Cameras: 500+ 360 degree images

20,000 lumens of AUTOMATIC LED Lighting DEFINE DAMAGE that is often missed!

6'10" (2.1m) Towers are attractive and catch rooftop condition

Integrated sensor & light technology only on when it's needed



Top and 360° views in one screen

Zoom, pan, annotate, download and share

Easily retrievable by license plate or date



Capture in detail, rim damage on a moving vehicle



See historical vehicle condition easily and quickly

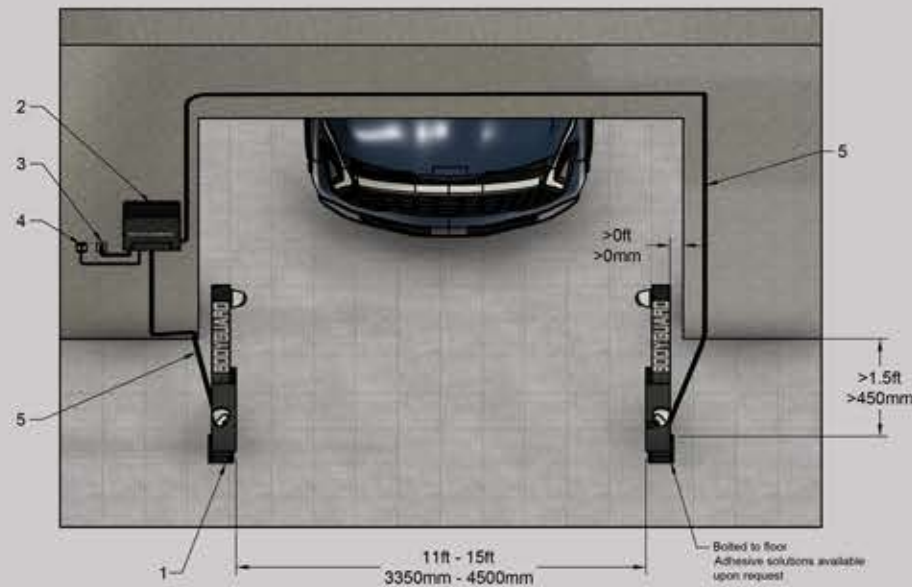


BODYGUARD

Vehicle Damage Defender

BODYGUARD Fits seamlessly into your service lane

- 3 hours to install
- Visible status lights
- Secured cloud based storage
- Automatic software updates
- Remote monitoring & support
- Access your data from anywhere

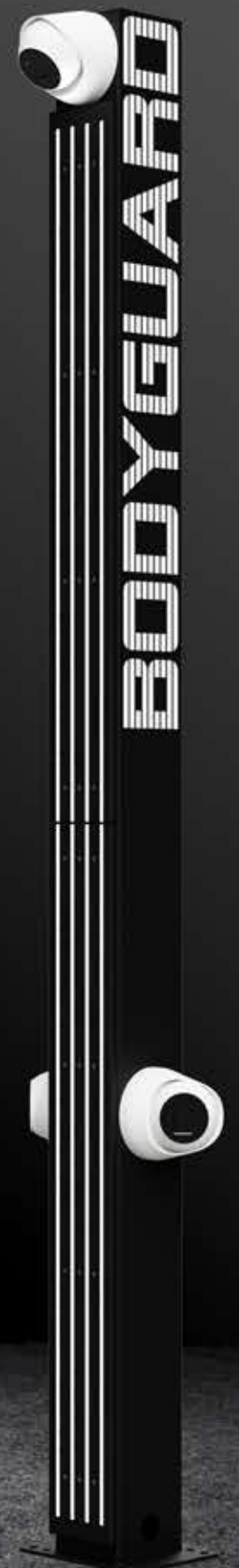


UK
CA + CE

Legend	
1	BODYGUARD Camera Tower
2	BODYGUARD Controller Box
3	120-240 VAC Power Input
4	Internet Connection
5	16 AWG 2-Conductor Copper Cable & Cat6 Network Cable

Electrical/Network Specifications	
Operating Temperature	0°C - 50°C
Power Draw	300W
Power Requirements	110-240V AC 50/60Hz
Environment	Indoor
Internet Speed	Minimum 15 Mbps Upload

Physical Specifications		
Item	Dimensions	Weight
BODYGUARD Camera Tower	174mm x 133mm x 2127mm 6.9 x 5.2" x 83.7"	29Kg 63lbs
	Including Cameras: 245mm x 364mm x 2127mm 9.7" x 14.4" x 83.7"	
BODYGUARD Controller Box	406mm x 477mm x 128mm 16 x 19" x 5"	14Kg 30lbs
Shipping Dimensions (palletized)	1220mm x 1016mm x 762mm	86Kg
	48 x 40" x 30"	190lbs



BL INNOVARE

Corporate Head Office
525 Cochrane Dr. Unit E
Markham, ON L3R 8E3, Canada
(905) 943-7988
bodyguardcam.com